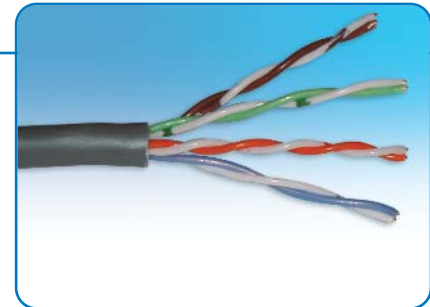


CAT 3800 5E

PLENUM CAT 5E CABLE



TECHNICAL SPECIFICATIONS

PRIMARY

Pairs	24 AWG Solid Copper
Dielectric	Foamed Fluorinated Ethylene Propylene
	0.036" ± 0.001" Diameter

CONSTRUCTION

Number of Pairs	4
Colors	1. Blue & White/Blue 2. Orange & White/Orange 3. Green & White/Green 4. Brown & White/Brown
Outer Jacket	Polyvinyl Chloride, 0.018" Wall Thickness
Final Diameter	0.190" ± 0.010"
Color	Black

ELECTRICAL CHARACTERISTICS

Impedance	100 Ohms ± 15
Capacitance	14 pF / ft.
Velocity of Propagation	72%
Center Cond. DC Resistance	28.6 Ohms / 1000 ft.

UL LISTING

Type CMP as specified in Article 800 of The National Electric Code.



Scan QR code with your smart phone to view online specs