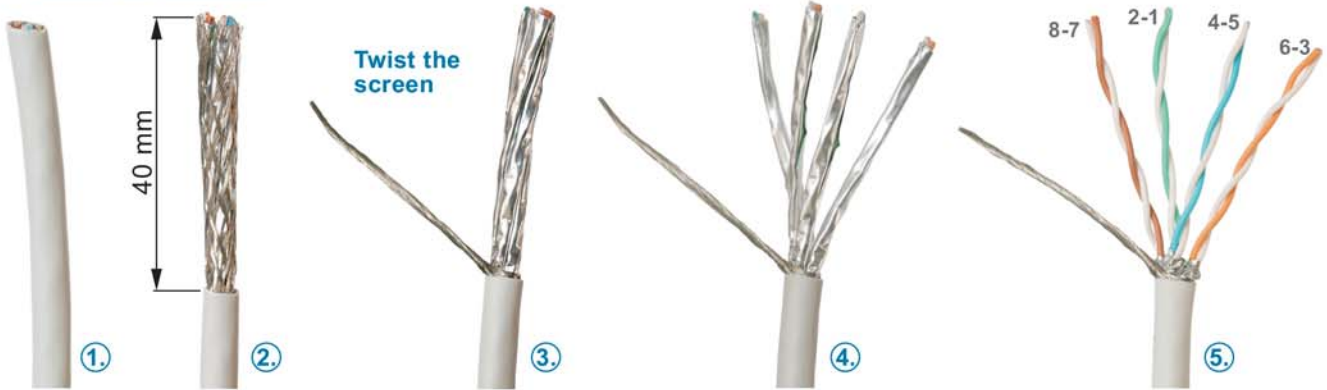




ASSEMBLY INSTRUCTION

NE8FDY-C6 | etherCON Receptacle

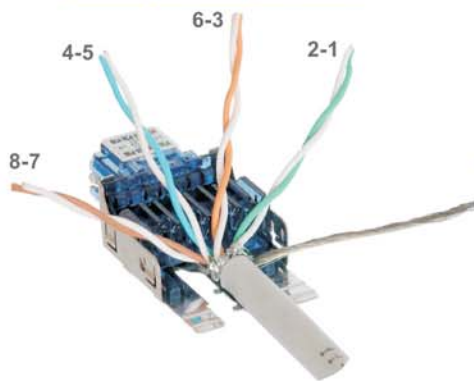
A Cable preparation



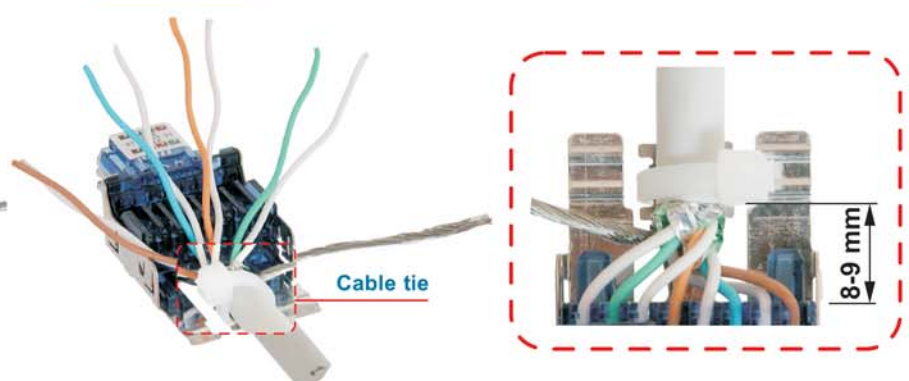
B Shielding



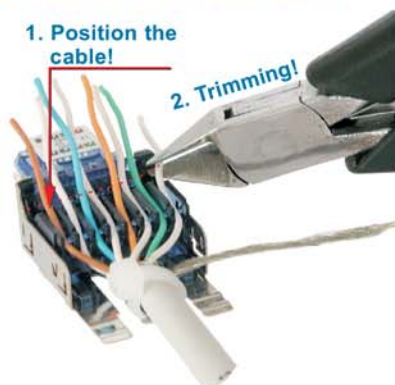
C Cable pairs separation



D Cable mount



E Position wires acc. label

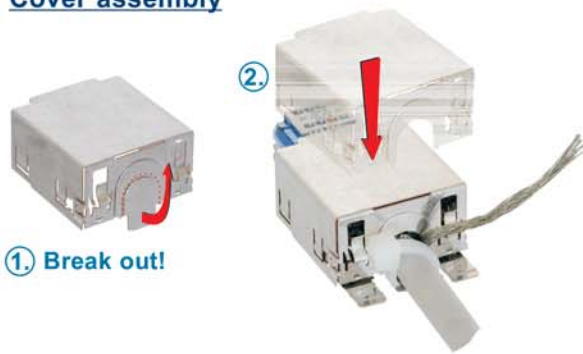


F Fix wires





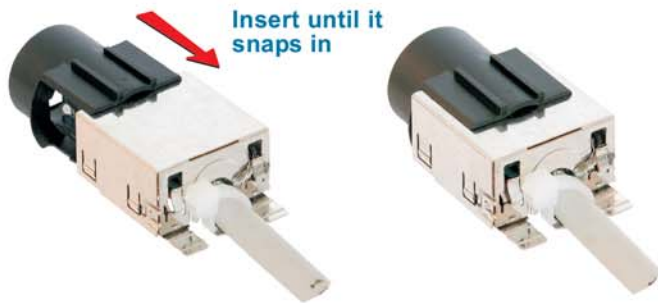
G Cover assembly



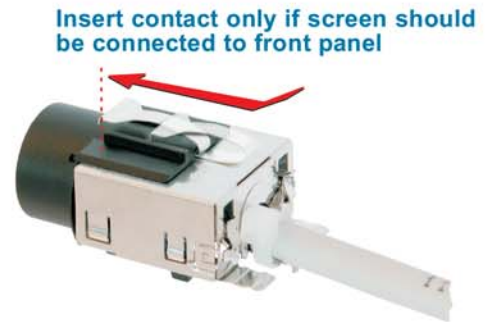
H Connect the screen



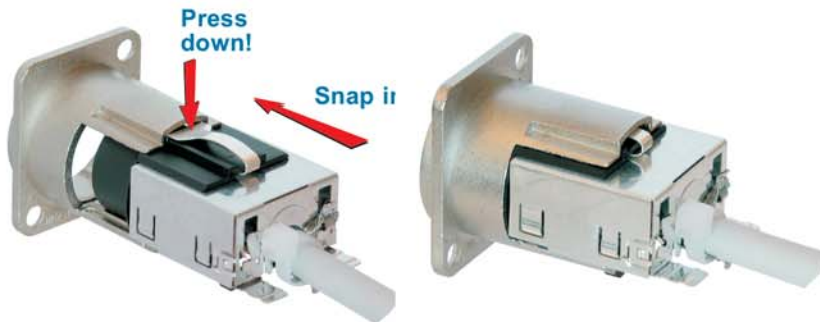
I Assembly the adapter



J Grounding option



K Assembly the chassis



L Finish



Attention: Before assembly secure the housing in the device.

Please fix the cable additionally.

Note for Right-Angle Version

Working steps same as above.

Except:

Step B - References to step B and bend the reinforcement metal right angle below.

Step G - The cable outlet must not be interrupted.

