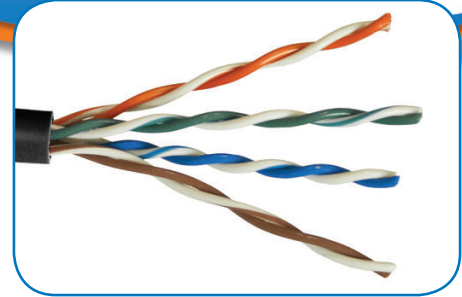


# C5E

**Cat 5e, 350 MHz**

## Description

Category 5e Cable - Unshielded  
 Solid Conductors - Non-Plenum



## Construction

### Conductor

Material: 24 AWG Bare Solid Copper

### Insulation

Material: PE  
 Diameter: 0.039 in. Nominal

### Pairing

2 Insulated Conductors twisted together  
 with varied lay lengths.

### Color Code

Pair#1: Blue and White/Blue  
 Pair#2: Orange and White/Orange  
 Pair#3: Green and White/Green  
 Pair#4: Brown and White/Brown

### Rip Cord

Nylon

### UL Listing

Type CMR as Specified in Article 800 of the  
 National Electric Code.

### Jacket

Material: PVC  
 Colors: C5E-BLK (Black, Blue)

### Overall Diameter:

.198 in. +/- (5.03mm)

### Approximate Weight

24 lbs.

## Electrical Characteristics

Max. Conductor DC Resistance:	28.6 ohms/1000ft
DC Resistance Unbalance:	< = 5%
Mutual Capacitance:	14 pF/ft
Pair-to-Ground Capacitance Unbalance:	330 pF/100m
Impedance:	100±15 ohm
Max. Delay Skew:	45 ns/100m
Velocity of Propagation:	70%

Frequency	SRL	Return Loss	Attenuation	NEXT	PS-NEXT	ELFEXT	PS-ELFEXT
MHz	dB	dB	dB(100m)	dB	dB	dB	dB
	Minimum	Minimum	Maximum	Minimum	Minimum	Minimum	Minimum
1	23.0	20.0	2.0	65.3	62.3	63.8	60.8
4	23.0	20.3	4.0	56.3	53.3	51.7	48.7
8	23.0	25.5	5.7	51.8	48.8	45.7	42.7
10	23.0	25.0	6.4	50.3	47.3	43.8	40.8
16	23.0	25.0	8.2	47.3	44.3	39.7	36.7
20	23.0	25.0	9.2	45.8	42.8	37.7	34.7
25	22.0	25.0	10.4	44.3	41.3	35.8	32.8
31.25	21.1	23.6	11.7	42.9	39.9	33.9	30.9
62.5	18.1	21.5	16.9	38.4	35.4	27.8	24.8
100	16.0	20.1	21.9	35.3	32.3	23.8	20.8
250	12.0	17.3	36.8	34.3	32.3	15.8	12.8
300	11.2	16.8	40.9	33.2	31.2	14.2	11.2
350	10.6	16.3	44.8	32.2	30.2	12.9	9.9