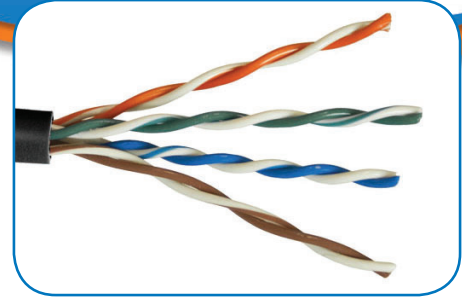


# P-C5E

**Cat 5e, 350 MHz, Plenum**

## Description

Category 5e Cable - Unshielded  
Solid Conductors - Plenum



## Construction

### Conductor

Material: 24 AWG Bare Solid Copper

### Insulation

Material: FEP  
Diameter: 0.039 in. Nominal

### Pairing

2 Insulated Conductors twisted together with varied lay lengths.

### Color Code

Pair#1: Blue and White/Blue  
Pair#2: Orange and White/Orange  
Pair#3: Green and White/Green  
Pair#4: Brown and White/Brown

### Rip Cord

Nylon

### UL Listing

Type CMP as Specified in Article 800 of the National Electric Code.

### Jacket

Material: PVC Alloy  
Colors: P-C5E-BLK (Black, Blue)

### Overall Diameter:

.189 in. +/- (4.8mm)

### Approximate Weight

25 lbs.

## Electrical Characteristics

Max. Conductor DC Resistance:	28.6 ohms/1000ft
DC Resistance Unbalance:	< = 5%
Mutual Capacitance:	14 pF/ft
Pair-to-Ground Capacitance Unbalance:	330 pF/100m
Impedance:	100±15 ohm
Max. Delay Skew:	15 ns/100m
Velocity of Propagation:	72%

Frequency	SRL	Return Loss	Attenuation	NEXT	PS-NEXT	ELFEXT	PS-ELFEXT
MHz	dB	dB	dB(100m)	dB	dB	dB	dB
	Minimum	Minimum	Maximum	Minimum	Minimum	Minimum	Minimum
1	23.0	20.0	2.0	70.3	68.3	63.8	60.8
4	23.0	20.3	4.0	61.3	59.3	51.7	48.7
10	23.0	25.0	6.4	55.3	53.3	43.8	40.8
16	23.0	25.0	8.2	52.3	50.3	39.7	36.7
20	23.0	25.0	9.2	50.8	48.8	37.7	34.7
31.25	21.5	23.6	11.7	47.9	45.9	33.9	30.9
62.5	18.1	21.5	16.9	43.4	41.4	27.8	24.8
100	16.0	20.1	21.9	40.3	38.3	23.8	20.8
250	12.0	17.3	36.8	34.3	32.3	15.8	12.8
300	11.2	16.8	40.9	33.2	31.2	14.2	11.2
350	10.6	16.3	44.8	32.2	30.2	12.9	9.9