

HD DIY Field Termination User Manual

For terminating HDMI regular wires

Thank you for purchasing the Luxi Electronics patented HD DIY (Do It Yourself) field termination products. If you are an experienced installer with the DIY products, you can just print out this first page with wire color coding picture for your reference. If you are new to the DIY products, please make sure you read through all the pages before performing the termination.

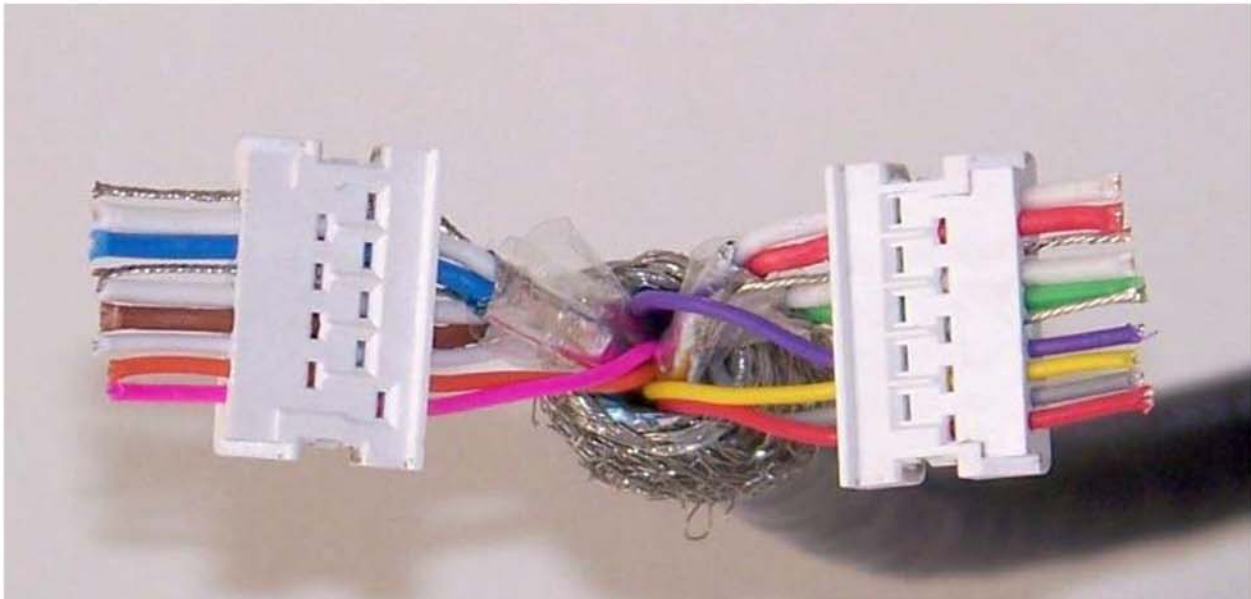
Wire color coding

Since there's no industry-wide HDMI color coding standard, please follow the instructions below closely.

Making a new cable:

If you are using Luxi HDMI regular wires (or other branded HDMI regular wires with the same wire colors), please follow the wire color coding below.

If you are using a HDMI regular wires with different wire colors, please mark the color cross reference on a piece of paper and make sure the same wire goes to the same pin on both ends.



Repairing one end of an existing cable:

If you are repairing a pre-terminated HDMI cable and only need to re-terminate one end, please write down the color coding for each pin carefully **before** cutting off the old plug.

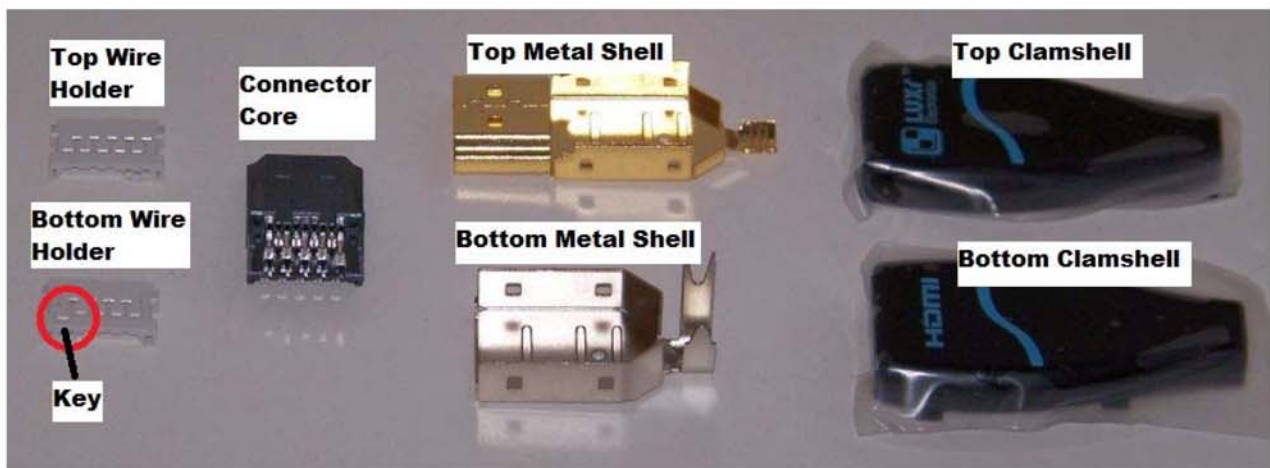
Identifying the components

First, make sure you have all the necessary parts for the field termination.



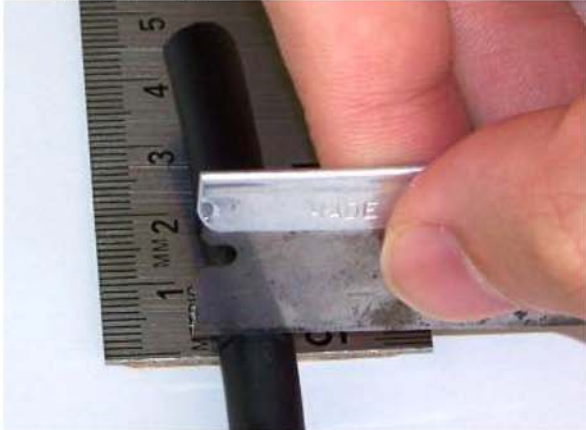
As shown in the picture above, you need the Luxi HDMI DIY connector components (5-piece), Luxi connector clamshell (2-piece), Luxi HDMI regular wires (or other brand), Luxi hand tool and a knife.

Be familiar with the component names as show below. HDMI connector has a wider side with 10 pins and a narrower side with 9 pins. We call the wider side the top side. The bottom wire holder can be easily identified by a keyed slot off the rest of the slots, see the red circle in the picture. The newer top wire holders are black, while the bottom wire holders remain white for easy identifications. For the two wire holders, the side with many slots is the inner side; this is the side which will be pushed onto the sharp pins of the connector core.



Step 1, wire preparations

1.1 Use a blade to cut around a circle of the HDMI cable overall jacket about 4 cm (1-1/2") from the end



1.2 Use the blade to slice along the cable overall jacket then peel off the overall jacket



1.3 Fold back the braids



1.4 Remove the overall aluminum foil; now the 19 wires inside the HDMI cable are exposed



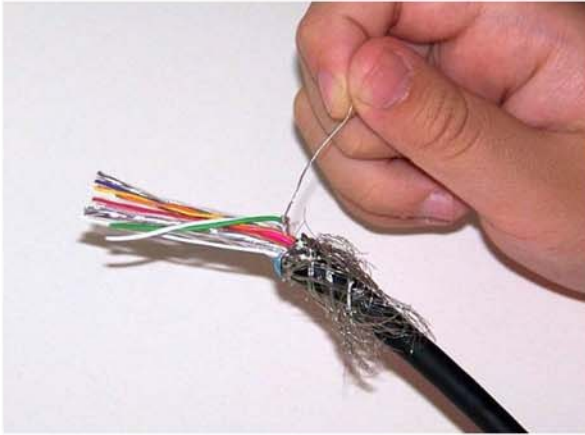
1.5 There are 4 twisted pairs. Cut off the plastic wrap on each pair 1/4" (6 mm) from the end



1.6 Cut off the aluminum foil from the very end



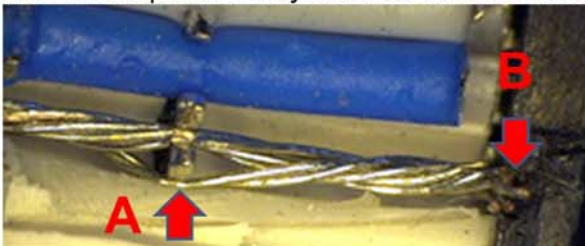
1.7 **Important!** Twist each drain wire tightly into a solid wire



1.8 Fan the wires out into two groups based on color coding on page 1

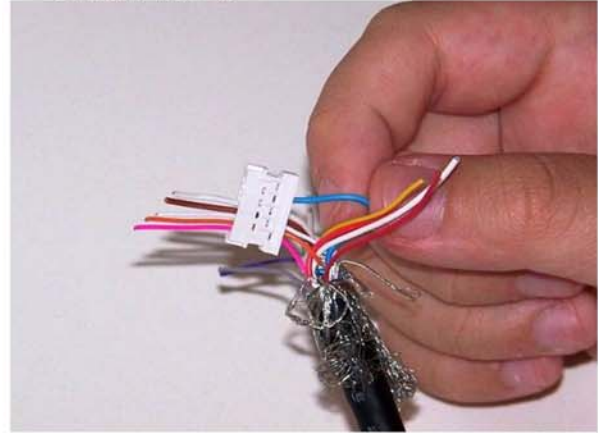


Important tip: the most common potential problem in DIY termination is the drain wire short circuit to the adjacent wire, see the picture below. If the drain wire is not twisted tightly, some strands may fall out of the V shaped pin and touch the next wire at point A. If the end of the drain wire is not cut cleanly, it may touch the next wire at point B. Pay extra attention to them

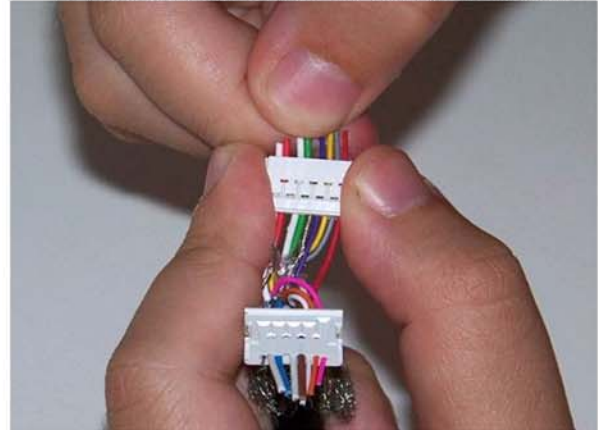


Step 2, wire threading

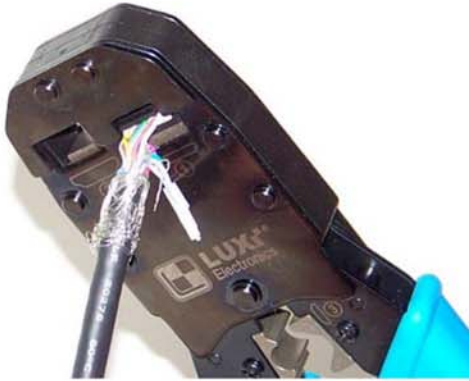
2.1 Carefully thread the wire one by one thru the wire holder per the color coding on page 1; the entrance has counter-sink holes; thread the 4 drain wires the last, make sure no strands left out



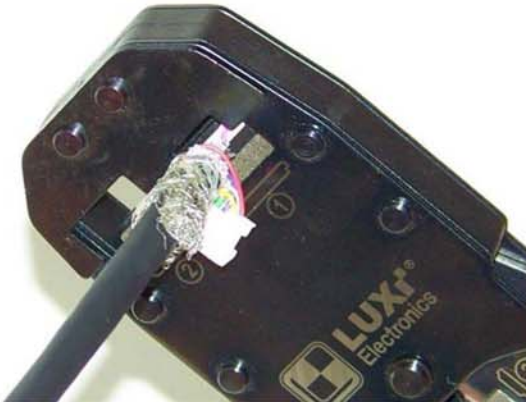
2.2 **Important!** Slide the wire holders as far inward as they can go for best performance



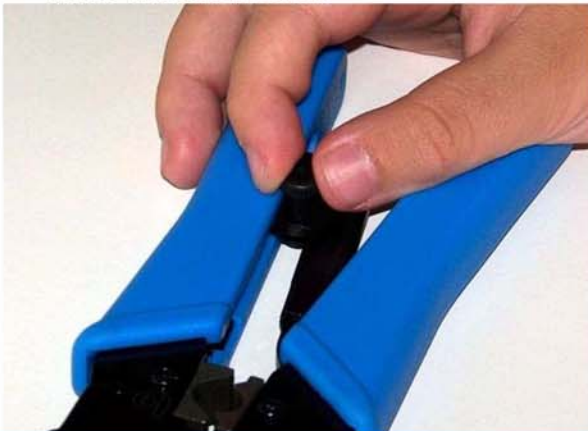
- 2.3 Insert one of the wire holders all the way into No. 1 hole of the hand tool following the marked orientation; perform a pre-crimp. Inspect the wire ends for any potential short



- 2.4 Slide and line up the other wire holder to about the same position; repeat the pre-crimp to it. Inspect the wire ends for any potential short



- 2.5 This tool has a ratchet design. If you ever need to release the latch, turn the thumb nail in the marked direction



- 2.6 Check the finished wire holders



During the pre-crimp the recessed blade would cut off the wires and a tiny slice of the wire holder; this is normal.

Check the cut wire ends for any potential short; check the drain wires from 4 twisted pairs to make sure they don't touch each other, and don't touch the overall cable shield or won't touch the metal shells in the next step. Use small piece of electric tape to cover it if necessary. The touched drain wires may trigger false reading of the tester (some LEDs might not lit) but won't affect overall signal performance.

Step 3, final assembling

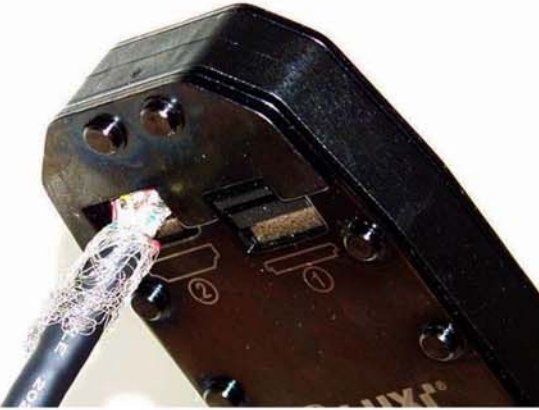
- 3.1 Line up the two wire holders onto the connector core; make sure the top holder goes on top; inner side engage with the pins



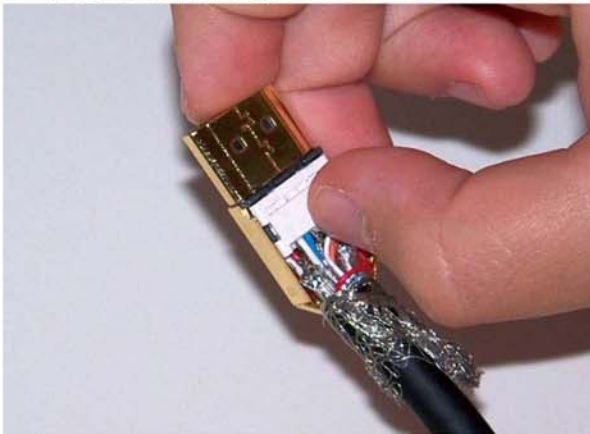
3.2 Use your fingers to press the wire holders into the connector core half way



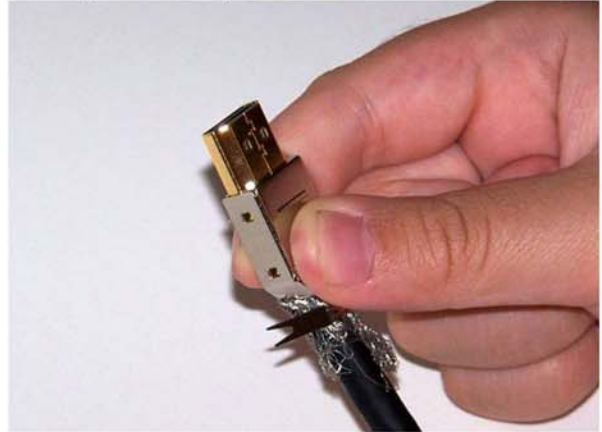
3.3 Insert the connector core with both wire holders all the way into No. 2 hole of the hand tool and perform crimp



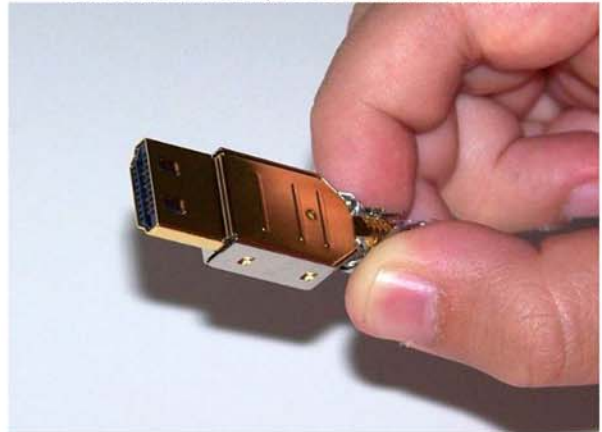
3.4 Slide the connector core into the top metal shell, push up with your thumbnail until you hear or feel a click



3.5 Place the bottom metal shell onto the top metal shell, line up the 4 notches, push together until you hear or feel clicks



3.6 Use the finger tips to gently bend the strain relief tabs inward; be careful not to be cut



3.7 Use the hand tool's No. 3 dies to crimp the strain relief tabs onto the cable jacket with regular wires; make sure it's a tight crimp



3.8 Trim off the excessive drain wires and braids



3.9 Place the metal shells into the bottom clamshell



3.10 Place the top clamshell onto the bottom clamshell and press them together until you hear or feel clicks



3.11 Peel off the plastic protection skin from the clamshells



Congratulations! You've just made a beautiful HDMI termination!



Testing

After finishing termination on both ends of the HDMI cable, use a Luxi HHT-200 HDMI hand held tester to test the cable and to make sure all pins are connected correctly.

If some pins get crossed or shorted, cut off the end with problem and re-terminate it.

Once pass the continuity test, connect the cable in the system to perform a signal test. If you see a normal picture on the screen and hear normal sound, the cable is good.



Max cable length

The max cable length depends on many factors such as the signal data rate (resolution), source device signal quality, TV sensitivity and the compatibility between them. As a rule of thumb, this DIY cable typically should work for up to 12 m (40') at 1080p signal rate. If the cable run is longer than 12 m (40') or you do not get a picture after the continuity test, insert a Luxi EHD-111 HDMI Extender at the TV end in between the cable and the TV to extend the distance. The max distance with extender is up to 24 m (80') with 1080p signal.

Troubleshooting

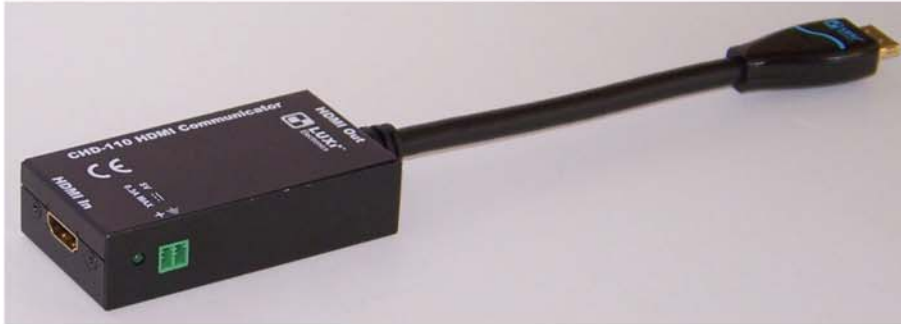
The Luxi DIY components are well designed and made. As long as the wires are inserted into the correct holes per the color coding on page 1, and drain wires are properly inserted to prevent sliding to the adjacent holes to create a potential short, and the wire slacks are reduced to minimum by sliding the wire holders as far as you can, the performance should be guaranteed by the design and better than the equivalent factory soldered HDMI cables.

If the terminated wires passed the HDMI tester test, all the connections in the system are secure and the all devices are powered up, but there's no picture or sound on the TV, try the simple steps below for troubleshooting:

- 1) Lower the source device (Blu-ray player, cable STB etc.) resolution to one step lower, e.g. from 1080p to 1080i; if the picture or sound comes out on the TV, then most likely the problem you had before was bandwidth/cable length related. Insert the Luxi HDMI Extender between the cable and the TV to fix the problem.



- 2) If after lowering the source device resolution and there's still no picture or sound on TV, then most likely the problem in the system is caused by the DDC line communication error (also known as handshaking or copyright errors). Insert a Luxi Communicator in between the cable and TV to fix the problem.



See the HDMI troubleshooting guide on Luxi website for more details.

Technical support

Please contact your distributor or directly to Luxi Electronics for technical support.

Re-order part numbers

You can re-order these parts from authorized Luxi distributors:

Part number	Model	Description
22-001-02	HD-28RD250	HDMI 28 AWG raw regular wire, 76 m/250'
22-001-03	HD-28RD500	HDMI 28 AWG raw regular wire, 152 m/500'
22-002-06	HD-30RB250	HDMI 30 AWG raw ribbon wire, 76 m/250'
22-002-07	HD-30RB500	HDMI 30 AWG raw ribbon wire, 152 m/500'
68-009-11	DIY-28DS10B	10 pack HDMI 28 AWG DIY connector for regular wire and clamshell bundle
68-010-01	DIY-30BS10	10 pack HDMI 30 AWG DIY connector for ribbon wire and clamshell bundle
68-011-01	DIY-28T	HDMI 28/30 AWG DIY hand tool
74-035-01	EHD-111	HDMI Extender, F-M pigtail, T-grip slim plug
74-006-01	CHD-110	HDMI Communicator, F-M pigtail, optional 5 V power supply not included
75-002-01	HHT-200	HDMI hand held tester with open and short test, one 9 V battery not included