



# Wireless Extender RX & TX ECW-100



**User Manual**  
**Ver 2.2**

# Thank you for purchasing this product

For optimum performance and safety, please read these instructions carefully before connecting, operating or adjusting this product. Please keep this manual for future reference.

## Surge protection device recommended

This product contains sensitive electrical components that may be damaged by electrical spikes, surges, electric shock, lighting strikes, etc. Use of surge protection systems is highly recommended in order to protect and extend the life of your equipment.

## Table of Contents

<b>1. Introduction.....</b>	<b>1</b>
<b>2. Features.....</b>	<b>2</b>
<b>3. Specifications.....</b>	<b>2</b>
<b>4. Package Contents.....</b>	<b>3</b>
<b>5. Device Layout.....</b>	<b>3</b>
<b>6. Operation Instructions.....</b>	<b>4</b>
<b>7. Device Updates.....</b>	<b>5</b>

# 1. Introduction

Transmit video signals wirelessly to TVs or monitors from a variety of sources. Compatible with Set-top boxes and Blu-ray disc players. No app installation or WiFi network needed for device usage. This pocket sized transmitter and receiver kit is portable and lightweight, making it easy to transmit and cast your screen on the go. Transmit your favorite videos, games, or presentations from all of your devices. Works perfectly with Windows, MacOS, Android and iOS, supporting USB-C or HDMI.



## 2. Features

- Watch Everything on a Bigger Screen
- Plug and Play, Simple Setup without Installing App
- Impressive OS and port compatibility
- Multitask with Mirror or Extend Mode
- Pocket Size

## 3. Specifications

**Antenna:** 1T1R (on board)

**Wi-Fi:** 5Ghz

**Transmitter Power Input:** None (powered by source)

**Receiver Power Input:** USB Type-C 5V / 1A

**Necessary USB-C to USB-A cable included**, most modern displays supply USB-A ports for power. If you still need/prefer a power adapter, we offer a compatible 5V / 2.1A wall adapter (**PS-USB5V21A**) for sale separately. Check product page for direct link, or paste SKU into search bar at Covid.com.

**Transmitter Interface:** USB Type-C

**Receiver Interface:** HDMI

**Output Wattage:** 5 Watts

**Connectivity:** Wi-Fi, USB, HDMI

**Controller Type:** iOS, Android, Windows, MacOS

**Max Extenders Per Channel:** 8 Max, 4 Recommended

**Color:** White

**Dimensions:** 6.89in (L) x 2.95in (W) x 1.77in (H)

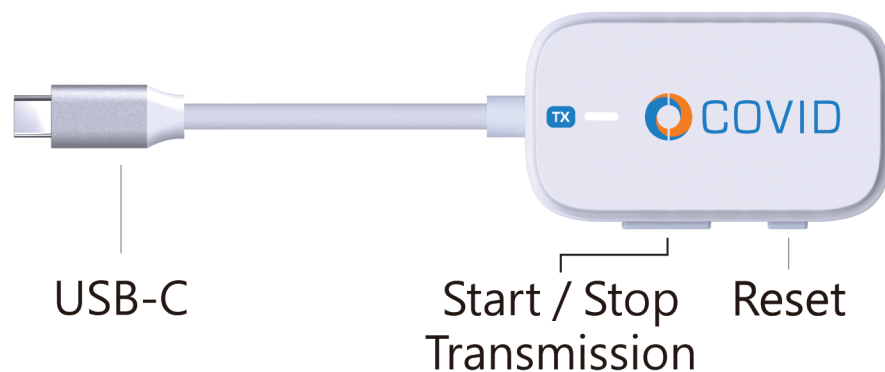
## 4. Package Contents

Before using this unit, please check the packaging and make sure the following items are contained in the shipping carton:

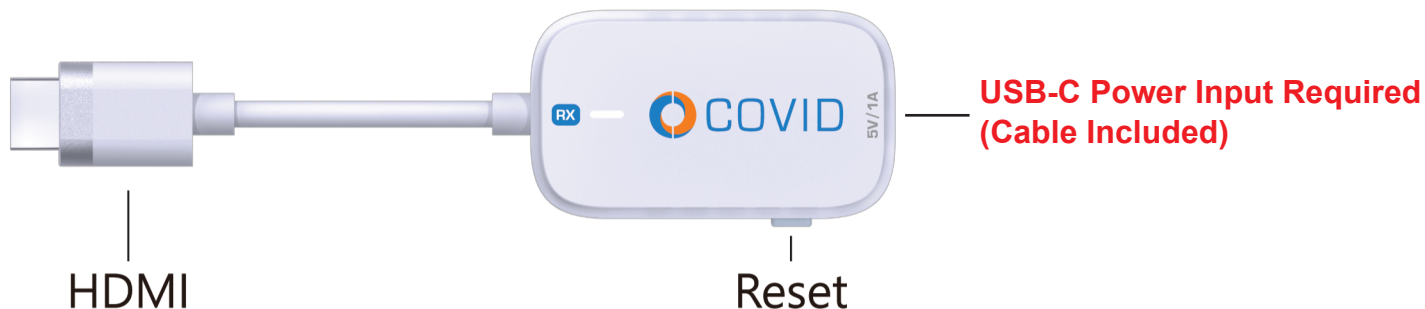
- 1) Transmitter -----1PC
- 2) Receiver ----- 1PC
- 3) USB-C to USB-A Cable -----1PC
- 4) User Manual ----- 1PC

## 5. Device Layout

**Transmitter** - Easily mirror whatever shows on your laptop or mobile screen.



**Receiver** - Display the signal passed from your transmitter on the screen.



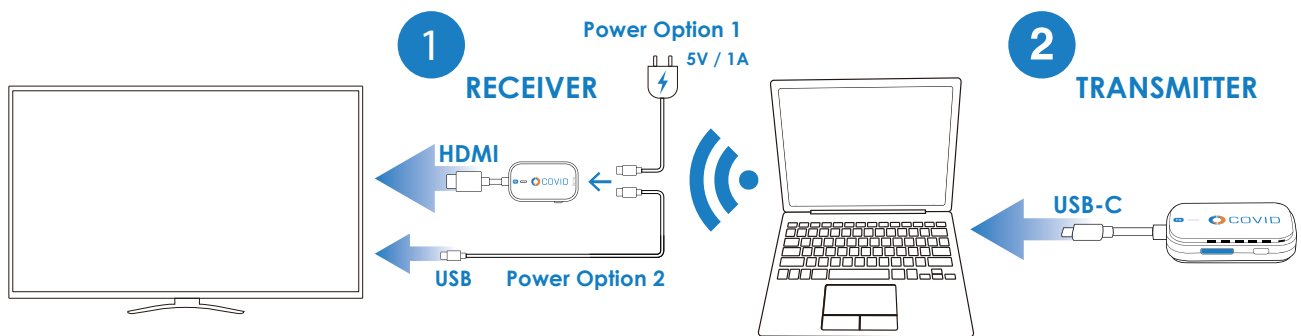
## 6. Operation Instructions

### 1. Install the receiver

First connect the Receiver to the HDMI port on the TV or monitor, and then connect power to the USB-C port with the included USB power cable by either a USB-A port on the display or a 5V / 1A wall adapter.

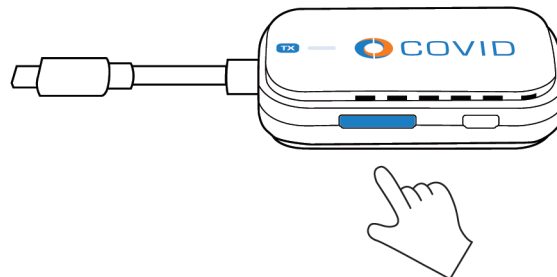
### 2. Install the transmitter

Plug the Transmitter into the USB-C port on a laptop or mobile device. Wait a few seconds until the flashing light on the transmitter remains lit, and it will begin transmitting to the receiver automatically.



### 3. Stop and restart transmitting

Press the PAIR button on the transmitter to stop or restart the transmission.

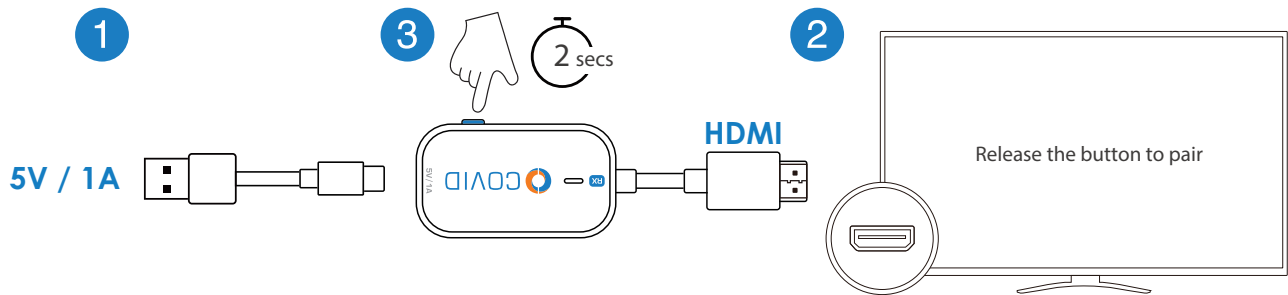


**Note: If transmission becomes unstable or pairing fails, hold the reset button for 10 seconds and pair again.**

# 7. How To Pair Transmitter With Receiver

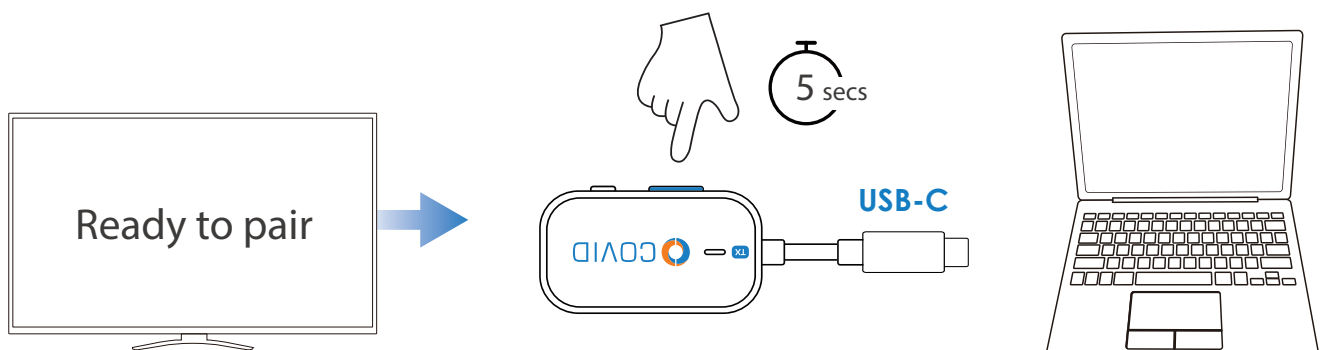
## 1. Turn on pairing mode for the receiver

- 1) Power up the receiver by USB or an external 5V / 1A adapter.
- 2) Plug the receiver into the HDMI port on the display.
- 3) Press the reset button on receiver for 2 seconds. Release when the screen shows “**Release the button to pair**”



## 2. Press the PAIR button on transmitter

Plug in the transmitter to your laptop or mobile device via USB-C. Press the **PAIR** button on the transmitter for 5 seconds to complete pairing while the screen shows “**Ready to pair**”. After pairing, the device will start transmitting to your display automatically.



**Note: If pairing fails or display shows “Out of range” cycle power to both devices by unplugging and then replugging the USB-C power cables, and then repeat the pairing process from the beginning.**

## 8. Device Updates

### 1. Enabling receiver SSID and PSK

- 1) Connect the receiver to the monitor, and then connect the USB-C end to a power source (5V / 1A).
- 2) Press the reset button on the receiver, and the monitor will display the SSID and PSK of the receiver, then release the button.

### 2. Connecting receiver to a network

- 1) Open the Wi-Fi settings on your phone or computer.
- 2) Connect to the SSID of the receiver in your Wi-Fi settings, and enter the PSK displayed on the monitor for the password to complete the connection.
- 3) Open a browser and enter **192.168.203.1** in the address bar.
- 4) Enter the settings page, turn on the internet settings, and connect the receiver to the network.

### 3. Upgrading over the web

- 1) Check the "**router**" icon on the monitor, and verify the receiver is connected to the network.
- 2) After connecting the receiver to the network, return to the settings page and select "**Upgrade**".
- 3) The system checks the current version status. If there is a newer version, agree to update to complete the system upgrade.
- 4) Connect the transmitter to the USB-C port on your computer or mobile device, wait for a few seconds until the flashing light on the transmitter stops, and then the screen will automatically project.
- 5) Repeat "**2) Connecting receiver to a network**" and select "**upgrade transmitter**". The system checks the current version status. If there is a newer version, agree to update to complete the transmitter upgrade. During the upgrade, the transmitter will be flashing fast, slow or will have no light. When the transmitter keeps its light on and the screen shows the mirrored content, the transmitter upgrade has finished.